



Vodafone is committed to reducing the use of natural resources.

Help us to preserve them by downloading, if necessary, the full user manual from the web site AUTOMOTIVE.VODAFONE.COM (Download section).

1. - ARMING AND DISARMING WITH THE VEHICLE ORIGINAL REMOTE CONTROL OR WITH THE VODAFONE REMOTE CONTROL (optional or combined)

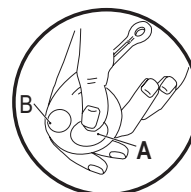
To arm the system press the door locking pushbutton of the vehicle original remote control or the "A" pushbutton of the Vodafone remote control.

The arming status is confirmed by:

- Vehicle doors locking (with the Vodafone remote control only when provided);
- Audible signals (if activated);
- Flashes of the direction lights (only when provided);
- LED of the emergency panel illuminated.

Button A >

to arm the alarm and to lock doors.



The protection features of the system become active after a 25 s arming period has elapsed (when the LED of the emergency panel starts blinking).

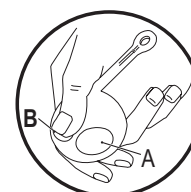
To disarm the system press the door unlocking pushbutton of the vehicle original remote control or the "B" pushbutton of the Vodafone remote control.

The disarming status is confirmed by:

- Vehicle doors unlocking (with the Vodafone remote control only when provided);
- Audible signals (if activated);
- Flashes of the direction lights (only when provided);
- LED of the emergency panel OFF.

Button B >

to disarm the alarm and to unlock doors.



Note: if also the Driver Card (optional) is provided it will be also possible to arm and disarm the system by pressing its pushbutton.

The system is delivered with a set of standard functionalities (active functions). The installer is able to activate some more functionalities (programmable functions) with an impact on the security and comfort the system will offer. The following are the lists of the two groups.

2. - ACTIVE FUNCTIONS

2.1 - Interior protection with ultrasonic volumetric sensor - The system protects the vehicle interior with a volumetric ultrasonic sensor. Any attempt to get into the vehicle will be detected and the alarm will trigger.

2.2 - Perimetric protection with door open warning diagnostic - The alarm will trigger by opening any door, boot and bonnet. Should you have left any door opened while arming, the system will signal it by 3 flashes of the direction lights and 3 audible signals (5 audible signals if the arming/disarming audible signals function has been activated).

2.3 - Cable cutting protection (only for systems with back-up battery siren) - The alarm will trigger if the system is not power supplied (cutting of cables - battery disconnection) signaling the sabotage.

2.4 - Engine starting inhibition - As soon as the system is armed the engine starting is not be possible anymore.

2.5 - Arming the system with the volumetric ultrasonic protection disabled - This function allows to arm the system leaving temporarily disconnected the interior volumetric protection. The protection must be disabled any time you leave somebody or an animal in the vehicle. Also if you want to leave any window opened please disable the protection to avoid false alarms. All other protections remain active.

To disable the volumetric protection proceed as follow:

switch the engine OFF being sure that the ignition/push button has been turned to the OFF/STOP position. Within 5 s press the emergency panel pushbutton and keep it pressed until it will flash once to confirm that the volumetric protection only has been disabled. By keeping the pushbutton pressed the system will confirm with two flashes that the additional sensor input only has been disabled, with three flashes for both of them disabled. The selected protection will remain disabled until the system will be disarmed. It will be automatically restored at the next arming or arm the system by pressing the "A" button of the remote control. Pressing the "A" button again, the volumetric protection is excluded (ultrasonic sensors); the exclusion is confirmed by one flashing of the direction indicators and one beep. By one more press of the "A" button, the volumetric protection becomes active and the additional sensors are excluded; the exclusion is confirmed by two flashes of the direction indicators and two beeps. By one more press of the "A" button, the volumetric protection and the additional sensors are excluded; the exclusion is confirmed by three flashes of the direction indicators and three beeps.

Note: on some vehicles the system automatically disables the volumetric protection if any windows is left opened.

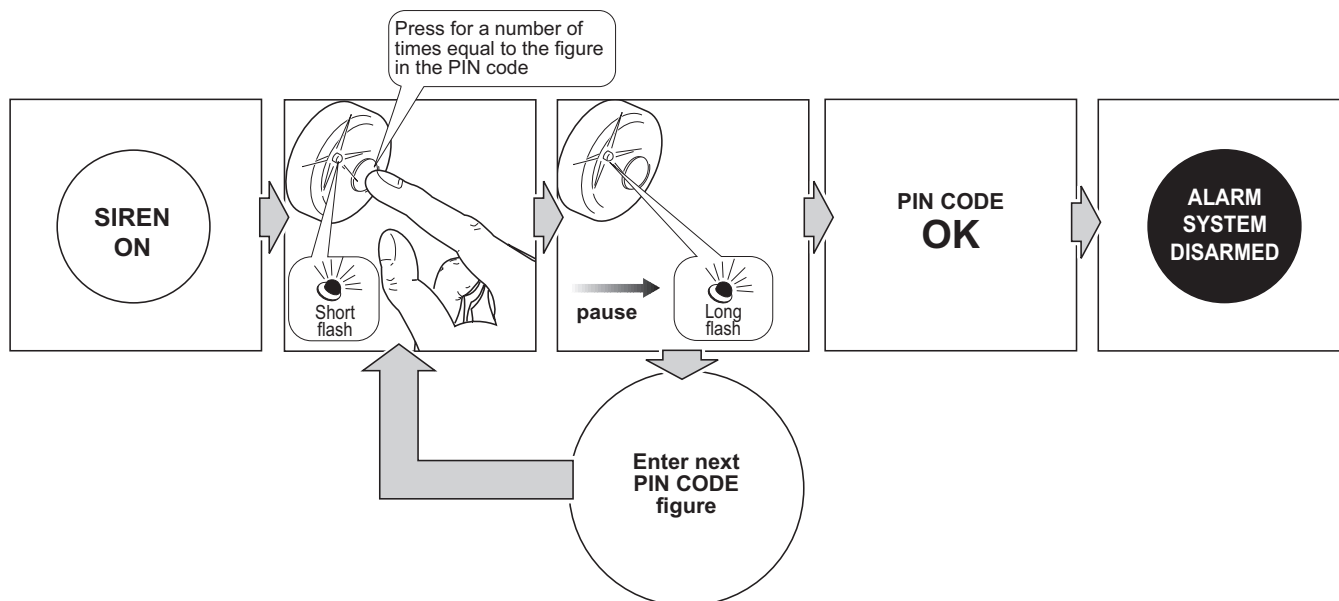
Ask your installer if this functionality is provided by the system fitted on your vehicle.

2.6 - Emergency panel LED - The LED main scope is to show the system arming and disarming conditions. When the system is armed the LED gets ON and remains illuminated until the 25 s arming period has elapsed. After that it starts blinking. It goes OFF as soon as the system is disarmed.

2.7 - Alarms memory - If the system has gone OFF (alarm ON) during the arming time it will warn you with 3 flashes of the direction lights and 3 audible signals (5 audible signals if the arming/disarming audible signals function has been activated). It also stores in its memory the reason of the occurred alarm and shows it on the emergency panel LED. Count the number of flashes and check the corresponding alarm reason on the table. By turning the key ON the memory will be deleted.

LED NUMBER OF FLASHES	ALARM ROOT CAUSE
1 flash	Door opening detection.
2 flashes	Ultrasonic volumetric detection.
3 flashes	Bonnet opening detection.
4 flashes	Ignition key ON detection.
5 flashes	Boot opening detection.
6 flashes	Door opening detection.
7 ÷ 14 flashes	"Technical alarm" detection. Contact your installer.

2.8 - Emergency disarming - In case of failure, open a door with the mechanical key, put it into the ignition key / push button. If the system is not disarmed or you have lost the original remote control, you can still turn OFF the system using the PIN code that you find on the PIN Code Card. Press the button on the control panel as many times as the number corresponding to the value of the first digit of the your Pin Code. With each press of the button corresponds to a short flash of the LED. A longer pause, is interpreted by the system as the end of the entry of the digit, which is signaled by a long flash of the LED. Compose the remaining digits of the PIN code, using the same procedure. Once you have successfully composed all four digits, the system disarms.



2.9 - Direction lights alarm flashes - When the system goes OFF (alarm ON) the siren sounds and the direction lights flash for 28 s.

3. - PROGRAMMABLE FUNCTIONS

3.1 - Activation and volume adjustment of the audible arming and disarming signaling - This function allows to activate a short audible signal to confirm the system's arming and disarming. Tuttavia questa abilitazione invalida l'omologazione ECER116. However, this enabling invalidates the homologation ECE R116.

3.2 - Passive arming - The system will automatically arm after 30 s the ignition key has been switched OFF and the driver side door has been opened and closed, so 30 s after the driver has left the vehicle.

3.3 - Auto re-arming - The system will automatically re-arm if, after 115 s, it has been disarmed and no one door has been opened (nobody gets on the vehicle).

3.4 - Auto re-arming with doors locking - As for auto re-arming, but doors will lock (only when provided).


3.5 - Passive engine starting inhibition - The starting inhibition becomes active after 115 s the vehicle has been switched OFF.

3.6 - For Window Closing Comfort functions with Vodafone remote control, Anti Hi-jacking, Garage mode
- See the user manual.

4. - INSTALLATION CERTIFICATE



- a) Any further alteration of the installation will invalidate the installation certificate.
- b) The installation certificate should be completed by the installer and handed over to the user.

<div style="display: flex; justify-content: space-between; align-items: center;"> <div>INSTALLATION CERTIFICATE</div>  </div>	
<p>I the undersigned, _____, professional installer,</p> <p>certify that the installation of the vehicle protection system described below has been carried out by myself in accordance with to the installation instructions supplied by the manufacturer of the system.</p>	
Vehicle description	
- Make:	
- Type:	
- Chassis number:	
- Plate number:	
Vehicle protection system description	
- Make (ex. VODAFONE):	
- Type (ex. Antitheft AK4615EUSAA):	
- Control unit serial number (ex. S/N 00046292591) *:	
- Omologation number (ex. E24 116R-000032, E24 10R-030824) *:	
at: _____,	on _____
Installer full address (and stamp): _____	
Installer signature: _____	
(specify the job position, please) _____	

*** NOTE: These datas are detected on the external plastic part of the product.**

5. - WARRANTY CONDITIONS

This product is guaranteed for 24 months from the date of purchase, validated by receipt or invoice. The warranty will be null and void if the product shows signs of tampering, incorrect installation, damage caused by falling or transport, negligence and anything else not imputable to manufacturing defects.

In the event of improper installation of the system, the manufacturer shall not be liable to compensate for damages:

- of any kind and direct or indirect;
- to things or to persons.

To benefit from warranty coverage, contact your authorized dealer with adequate documentation showing the date of purchase.

The manufacturer shall not be liable for any faults or malfunctions in the anti-theft device and/or in the electrical system of the vehicle due to incorrect installation and/or to failure to comply with the indicated technical specifications. The system must only be considered as a deterrent against theft attempts.

6. - DECLARATION OF CONFORMITY

Hereby, Vodafone Automotive SpA, declares that the components Alarm control unit types 4604, 4605, 4610, 4615, 4616, 4625, 4627, 4635, 4645, 4665, 4666, 4670, 4675, 4676, 4684, 4685, 4693, 4695, 4696, 4698 and transmitters types 8723, 8772, 8015, 2771 are in compliance with the essential requirements and other relevant provisions of RED Directive 2014/53/EU. Please, find the complete declarations on the web page automotive.vodafone.com (Download section).

7. - RADIO FREQUENCIES AND POWER LEVELS

Alarm control unit types 4604, 4605, 4610, 4615, 4616, 4625, 4627, 4635, 4645, 4665, 4666, 4670, 4675, 4676, 4684, 4685, 4693, 4695, 4696, 4698: 869,5 MHz and 869,9 MHz with Power of 0 dBm

Transmitters types 8723, 8772, 8015: 433,9 MHz with Power of -12 dBm

Transmitters type 2771: 433,9 MHz with Power of -30 dBm