

ImpactStep - Innovative, cost-saving, safe.

Rhino Products' ImpactStep protects your vehicle from low-speed parking and loading impacts. This significantly reduces body repair costs and vehicle downtime which leads to big savings, particularly across entire fleets. ImpactStep is fitted with advanced shock absorbing units and a special pivoting bracket that protects the vehicle from low-speed impacts to keep your van moving. It has also been designed with health and safety in mind to protect van users - with a full width design, large safety tread area and anti-slip gripping tape.



Parking and loading protection



20 min assembly & fitting time

DIMENSIONS

Dimensions

- Length
- Width
- Height

(L1)
(W1)
(H1)

Measurements

1662mm
135mm
95mm

WEIGHTS

Weight

(non sensor version)
14.61Kg

Weight

(with sensors)
14.89Kg

Outriggers weight

Min 4.44Kg - max 13.91Kg

Top of step to ground (unladen)

Min 350mm - max 420mm

OUTRIGGERS



The ImpactStep is packaged into two boxes; one with the step itself and one with the fitting kit which includes all fixings required, detailed installation instructions and a pair of bespoke outriggers which are individually designed to suit each vehicle. These outriggers are fitted to mounting points on the underside of the van chassis and extend outwards to position the step in the optimum location for ease of entry. Thanks to the ImpactStep's twin rubber buffer shock absorbers and unique pivoting bracket design, the force of low speed parking and loading collisions are limited to the step itself and therefore reduce damage to the vehicle chassis.

VARIANTS

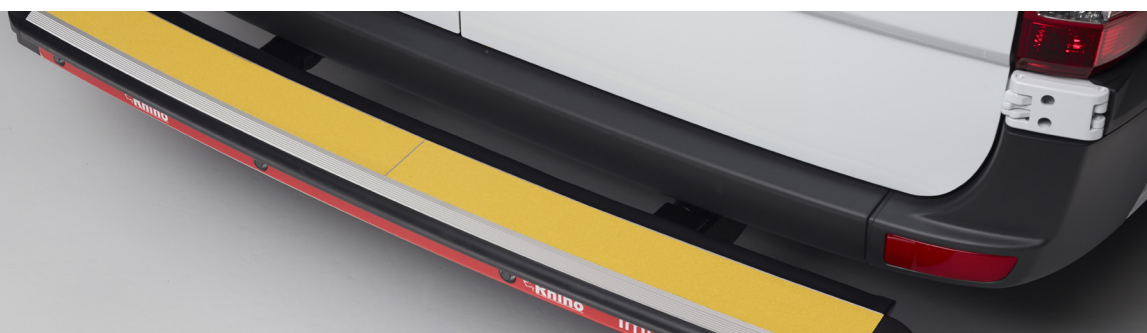
The ImpactStep is available in two options:

1. With reversing sensors.
2. Without reversing sensors.

Please note – Vehicles with manufactures/aftermarket reversing sensors will need to be disconnected as our steps may interfere with the sensor operation.

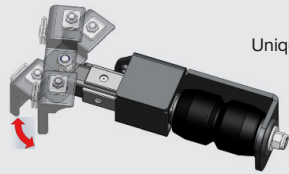


Maximum load carrying capacity



SHOCK ABSORPTION

The ImpactStep is able to protect your vehicle during parking and loading collisions, thanks to a pair of innovative shock absorbers. It is possible that these will be damaged in the event of an impact caused by shearing of the 8.8 grade bolts used and therefore we offer a spares kit (SK206) with replacement shock absorbers.



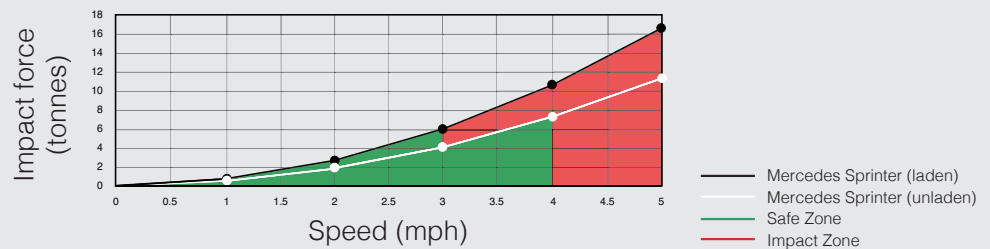
Unique rubber shock absorber



TESTING

The ImpactStep has been engineered to achieve a safe failure mode to minimise any significant damage occurring to the vehicle chassis. Following rigorous internal testing, the step was independently tested at Millbrook Proving Ground - one of the world's leading automotive industry test facilities.

During the Millbrook test, the ImpactStep's safe failure mode successfully withstood impacts of up to six tonnes at 3mph on a fully laden Mercedes Sprinter.



MATERIAL

WHERE USED

ADVANTAGES

Aluminium 6063 T6

- | | | |
|--|--|--|
| <ul style="list-style-type: none"> - Clear anodised - Architectural alloy - Thickness 3.0mm | <ul style="list-style-type: none"> - ImpactStep extrusion | <ul style="list-style-type: none"> - Extremely durable, high tensile and yield strength - Excellent weight to strength ratio - Scratch resistant - High corrosion resistance |
|--|--|--|

Composites

- | | | |
|---|---|--|
| <ul style="list-style-type: none"> - Polymer composite - Glass reinforced - Econyl GF30% | <ul style="list-style-type: none"> - End caps right / left | <ul style="list-style-type: none"> - Low weight, high strength ratio - High temperature variance - UV resistant |
|---|---|--|

Rubber

- | | | |
|---|---|---|
| <ul style="list-style-type: none"> - Natural rubber 70 shore hardness - EPDM60 - Natural rubber - Commercial rubber | <ul style="list-style-type: none"> - Shock absorption units - Rubber extrusion - Rubber infill - Hollow rubber spring - Anti-vibration washers | <ul style="list-style-type: none"> - Excellent impact strength - Anti-vibration |
|---|---|---|

Labels

- | | | |
|---|---|---|
| <ul style="list-style-type: none"> - Yellow textured anti-slip - Orafol Oralite 5600E Red 030 | <ul style="list-style-type: none"> - Tread tape for step - Reflective label | <ul style="list-style-type: none"> - Anti-slip |
|---|---|---|

Stainless steel 304

- | | | |
|---|--|---|
| <ul style="list-style-type: none"> - Polished - 18/8 quality - Thickness 1.5mm | <ul style="list-style-type: none"> - Hex recess track plate | <ul style="list-style-type: none"> - Durable - Rust free - Luxury finish |
|---|--|---|

Mild steel

- | | | |
|--|---|--|
| <ul style="list-style-type: none"> - Mild powder coated steel | <ul style="list-style-type: none"> - Ram support | <ul style="list-style-type: none"> - High strength - Corrosion protected |
|--|---|--|

Fixings

- Multi-grip pop rivets (main connection method)
- Bolts & (self locking) nuts size M8, combination of stainless and galvanised steel

Tools required for installation

- 13mm spanner (17mm and 19mm spanners also required on some vehicles)
- Allen key (included)

